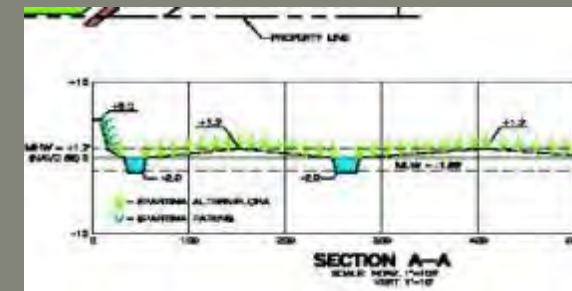


MITIGATION PLAN COMPONENTS OVERVIEW

Steven Martin, Environmental Scientist
USACE Institute for Water Resources
21 March 2019



"The views, opinions and findings contained in this report are those of the authors(s) and should not be construed as an official Department of the Army position, policy or decision, unless so designated by other official documentation."



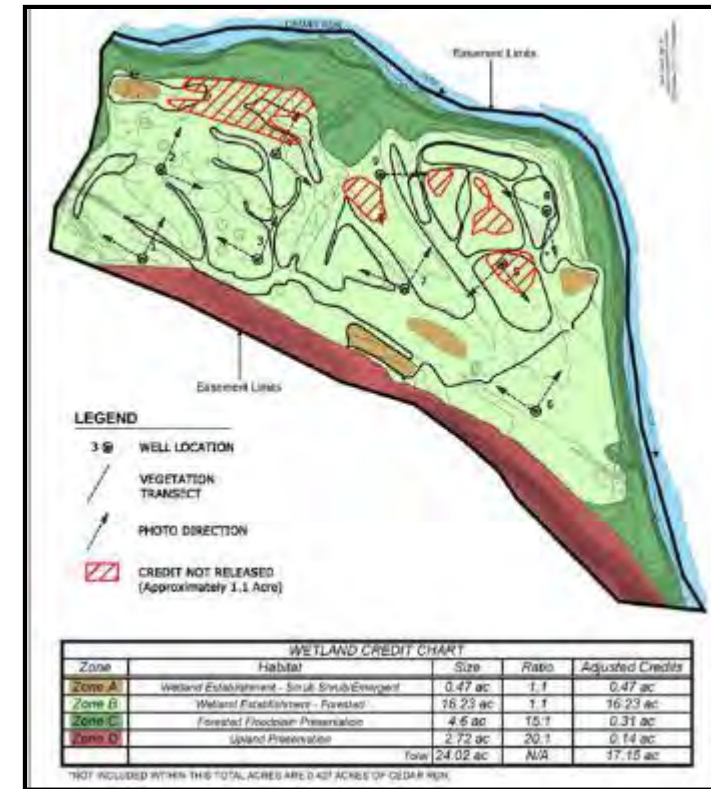
**US Army Corps
of Engineers®**



MITIGATION PLAN COMPONENTS

(33 CFR 332.4(C))

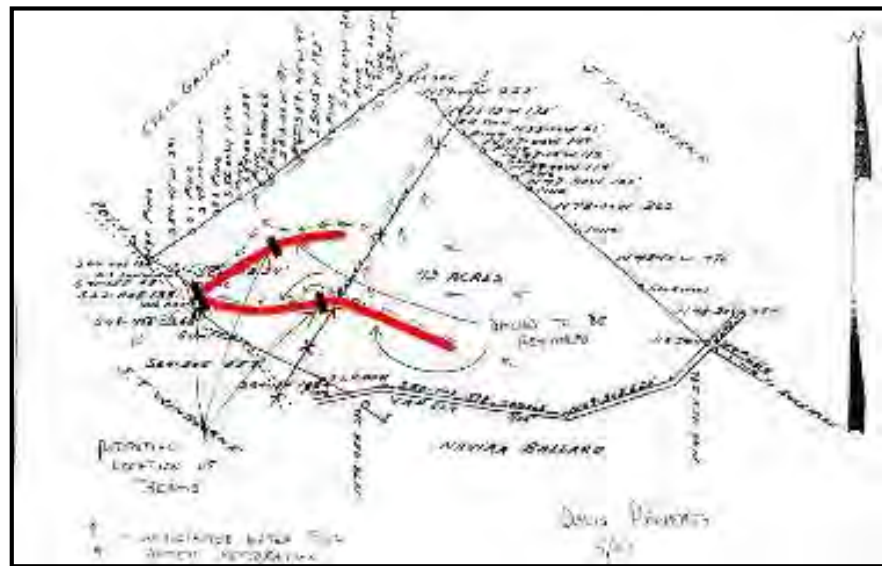
1. Objectives
2. Site selection
3. Site protection instrument
4. Baseline information
5. Determination of credits
6. Mitigation work plan
7. Maintenance plan
8. Performance standards
9. Monitoring requirements
10. Long-term management plan
11. Adaptive management plan
12. Financial assurances



LEVEL OF DETAIL

Commensurate with scale and scope of the impacts and project:

- Impact acreage, linear feet, wetland/habitat type and sensitivity
- Degree of risk and uncertainty
- Practitioner's track record



OBJECTIVES

Project Goals: Broad statement of intended outcome

- Basis for selecting a site and design
- Gives rise to specific project objectives and performance standards

Objectives: Specific elements, functions, or services to be provided by the project

- More detail than goals and measurable
- Incl. features critical to achieving the goals



PERFORMANCE STANDARDS

Observable or measurable attributes used to determine if project meets its goals and objectives.

Identify:

- attribute to be achieved
- level that defines success
- period of time over which standard must be met

Focus on a measurable outcome NOT completion of an action

Include clear measures whether
Qualitative or Quantitative



SITE SELECTION

1. Physical & chemical characteristics
2. Watershed scale features
3. Size & location
4. Adjacent land use
5. Foreseeable effects of project
6. When possible, restoration over establishment
7. Avoid over-engineered features
8. Focus on naturally variable hydrologic regimes



BASELINE INFORMATION

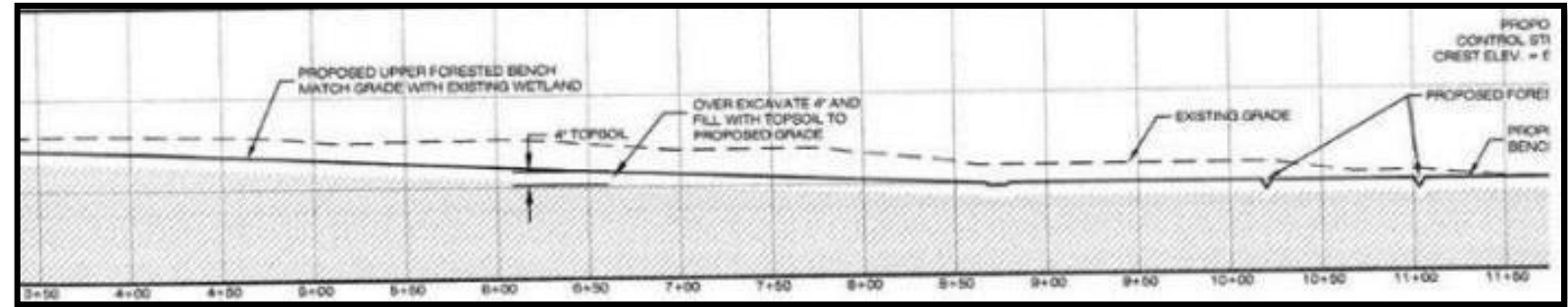
Description of impact and mitigation sites

- Historic and current ecological conditions
- Landscape position & topography
- Current soils, hydrology, & vegetation
- Functions and services
- Jurisdictional determination
- Property lines, utilities, easements
- Existing structures
- Land use conflicts (*e.g.*, airports)



MITIGATION WORK PLAN

Detailed written construction specifications & descriptions for target wetland characteristics



MAINTENANCE PLAN

Scheduled maintenance & frequency
Fencing & signage
Trash & debris removal
Trespass control
Funding
Long-term management plan



8. ADAPTIVE MANAGEMENT PLAN

Procedures to

- Address unforeseen changes
- Learn from success & failure

Why?

- Increases sustainability

How?

- Plan
- Monitor
- Analyze
- Implement

